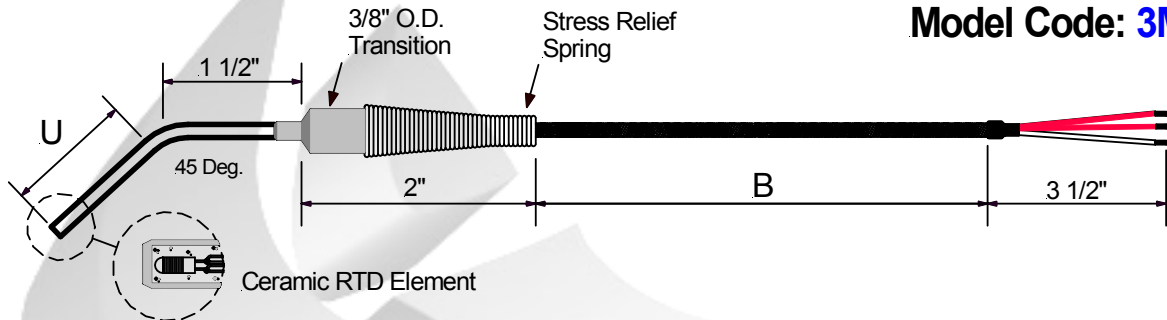


# Mineral Insulated RTD

## General Purpose Type: 45 Deg. Bend

Operating Temperature:  
-200 C to +500 C Max.

**Model Code: 3M**



Model: **A** **B** **C** **D** - **E** **F** - **G** - **H** **I**

**3M**

A	Outside Diameter
1	0.079"
2	0.125"
3	0.188"
4	0.250"

B	Sheath Material
A	304 Stainless
B	316 Stainless

C	"U" Dimension
	Specify "U" Length In Inches <u>0 0 6</u>

Example "U" is 6" = 006

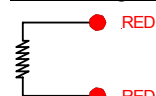
D	"U" Fractional Dimension
A	0.125"
B	0.188"
C	0.250"
D	0.315"
E	0.375"
F	0.500"
G	0.625"
H	0.750"
I	0.875"
N	None

E	RTD Element Type	
	Ohms	Class
1	1 x Pt100	1
2	2 x Pt100	3
3	1 x Pt1000	5
4	2 x Pt1000	7
5		2
6		4
7		6
8		8

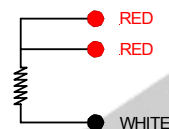
Temperature Coefficient: 0.00385  
Platinum element  
IEC 751

F	RTD Wire Connection
A	2 Wire Configuration
B	3 Wire Configuration
C	4 Wire Configuration

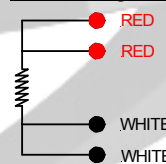
### 2 Wire Configuration



### 3 Wire Configuration



### 4 Wire Configuration



G	"B" Dimension
	Specify "B" Length In Inches <u>0 4 8</u>

Example "B" is 48" = 048

H	Cable Insulation Description
A	24 gage, Stranded, Fiberglass
B	24 gage, Fiberglass, Metal Braid
C	.281" O.D. Flexible Armor Cable
D	.210" O.D. Flexible Armor Cable
E	24 gage, Stranded, Teflon
F	24 gage, Stranded, Sheilded, Teflon
G	24 gage, Stranded, PVC
H	24 gage, Stranded, Sheilded, PVC

I	Termination
1	3 1/2" Split leads & bare ends
2	3 1/2" Split leads & No.10 spade lugs
3	Standard Male Plug (350 F)
4	Standard Female Jack (350 F)
5	Mini Male Plug (350 F)
6	Mini Female Jack (350 F)

Connectors can only be installed on 2 & 3 wire configuration RTDs.

Nordic Sensors Ind. Inc. Tel: 1-888-667-3421 & Fax: 1-888-867-9986.