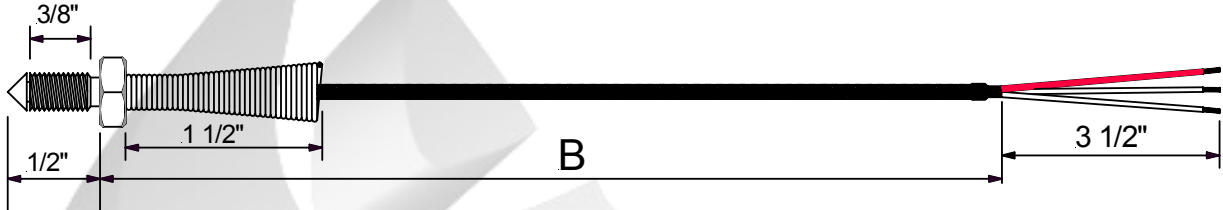


Plastic Industry RTD's

Nozzle Bolt Style RTD

Model Code: **1D**

Operating Temperature: -200 C to +250 C



Model: **1D** 1. 2. 3. 4. 5. - 6. 7.

1. Nozzle Bolt Thread Size

1	1/4" x 28 UNF
2	M6 x 1mm
3	M6 x 1.25mm
4	M8 x 1mm
5	M8 x 1.25mm

2. Wire Description

S	26 Gage, Stranded, Stainless Steel Braid
T	26 Gage, Stranded, Teflon
X	0.210 O.D., Flexible Armor, Teflon Wire
F	26 Gage, Stranded, Fiberglass Cable
C	0.210 O.D., Flexible Armor, Fiberglass Wire

3. Termination Type

0	3" Split Leads & 1/2" Bare Ends.
1	3" Slip Leads & Spade Lugs
2	Standard Male Plug (2 & 3 Wire config. only)
3	Standard Female Jack (2 & 3 Wire config. only)
4	Mini Male Plug (2 & 3 Wire config. only)
5	Mini Female Jack (2 & 3 Wire config. only)

4. Accessories

A	None
B	Bx Connector
C	Cable Clamp

5. "B" Dimension

"B" = 0 4 8 "

Leads Wire Length In Inches

6. RTD Element Type

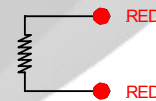
Ohms	Class A	Class B
1 x Pt100	1	2
2 x Pt100	3	4
1 x Pt1000	5	6
2 x Pt1000	7	8

Temperature Coefficient: 0.00385
Platinum element
IEC 751

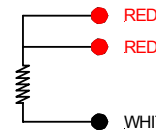
7. RTD Wire Connection

A	2 Wire Configuration
B	3 Wire Configuration
C	4 Wire Configuration

2 Wire Configuration



3 Wire Configuration



4 Wire Configuration

