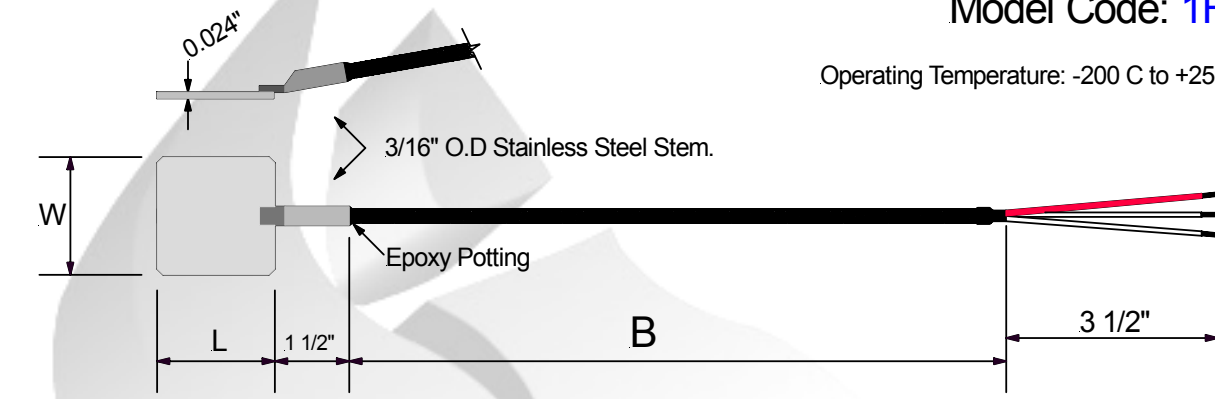


# Plastic Industry RTD's

## Shim Stock Style RTD. Stainless Steel Shim

Model Code: **1F**

Operating Temperature: -200 C to +250 C



Model: **1F**  1.  2.  3.  4.  5.  -  6.  7.

**1. Shim Size: Width x Length**

1	1/2" x 1/2"
2	3/4" x 3/4"
3	3/4" x 7/8"
4	1" x 1"

**5. "B" Dimension**

**"B" = 0 4 8 "**  
Leads Wire Length In Inches

**2. Wire Description**

S	26 Gage, Stranded, Stainless Steel Braid
T	26 Gage, Stranded, Teflon
X	0.210 O.D., Flexible Armor, Teflon Wire
F	26 Gage, Stranded, Fiberglass Cable
C	0.210 O.D., Flexible Armor, Fiberglass Wire

**6. RTD Element Type**

Ohms	Class A	Class B
1 x Pt100	1	2
2 x Pt100	3	4
1 x Pt1000	5	6
2 x Pt1000	7	8

Temperature Coefficient: 0.00385  
Platinum element  
IEC 751

**3. Termination Type**

0	3" Split Leads & 1/2" Bare Ends.
1	3" Slip Leads & Spade Lugs
2	Standard Male Plug (2 & 3 Wire config. only)
3	Standard Female Jack (2 & 3 Wire config. only)
4	Mini Male Plug (2 & 3 Wire config. only)
5	Mini Female Jack (2 & 3 Wire config. only)

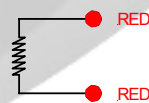
**7. RTD Wire Connection**

A	2 Wire Configuration
B	3 Wire Configuration
C	4 Wire Configuration

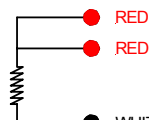
**4. Accessories**

A	None
B	Bx Connector
C	Cable Clamp

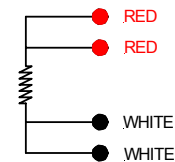
**2 Wire Configuration**



**3 Wire Configuration**



**4 Wire Configuration**



Nordic Sensors Ind. Inc. Tel: 1-888-667-3421 & Fax: 1-888-867-9986.