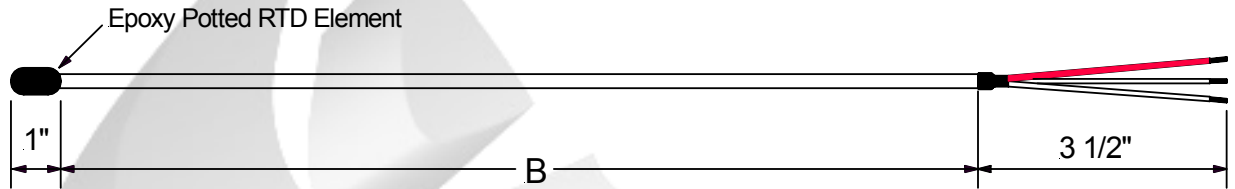


SPECIAL SENSOR ASSEMBLIES

Epoxy Potted RTD Assembly

Low temperature application

Model Code: **Z3**



Operating Temperature: -200 C to +250 C

Steps To Follow:

Model: **Z3** 1. 2. 3. 4. 5. 6.

1. Wire Description

S	24 Gage Stranded Stainless Steel Braid
F	24 Gage Stranded Fiberglass Cable
T	24 Gage Stranded Teflon Cable

4. "B" Dimension

"B" = 0 4 8 "

Leads Wire Length In Inches

2. Termination Type

0	3" Split Leads & 1/2" Bare Ends.
1	3" Slip Leads & Spade Lugs
2	Standard Male Plug (2 & 3 Wire config. only)
3	Standard Female Jack (2 & 3 Wire config. only)
4	Mini Male Plug (2 & 3 Wire config. only)
5	Mini Female Jack (2 & 3 Wire config. only)

5. RTD Element Type

Ohms	Class A	Class B
1 x Pt100	1	2
2 x Pt100	3	4
1 x Pt1000	5	6
2 x Pt1000	7	8

Temperature Coefficient: 0.00385
Platinum element
IEC 751

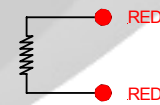
3. Accessories

N	None
X	Bx Connector
C	Cable Clamp

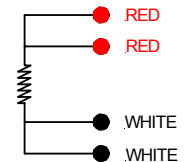
6. RTD Wire Connection

2	2 Wire Configuration
3	3 Wire Configuration
4	4 Wire Configuration

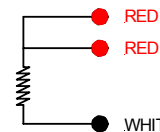
2 Wire Configuration



4 Wire Configuration



3 Wire Configuration



Nordic Sensors Ind. Inc. Tel: 1-888-667-3421 & Fax: 1-888-867-9986.